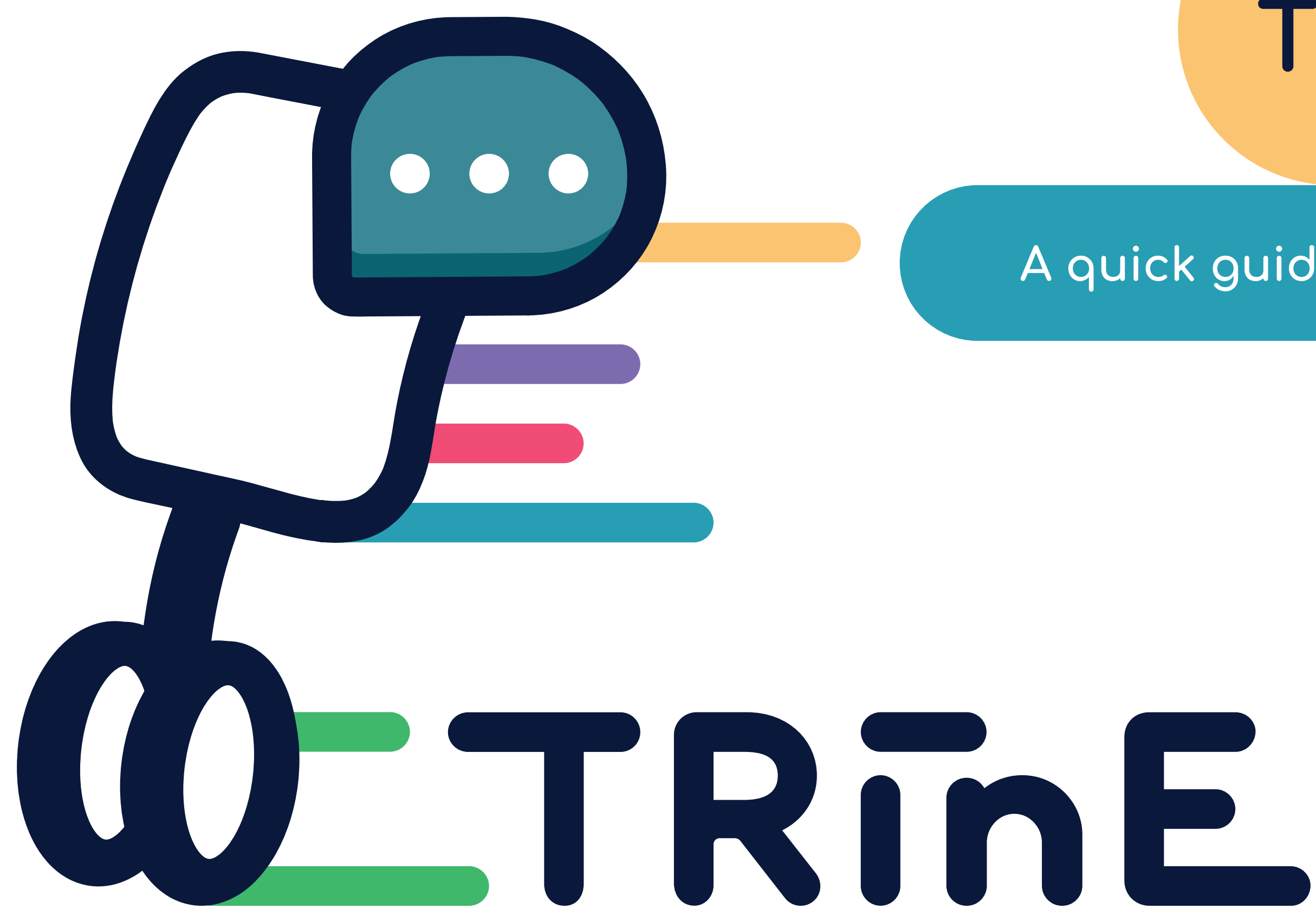


# TRinE – Telepresence Robots in Education

A quick guide on the use of telepresence robots in the educational sector

Basics, first steps and use cases



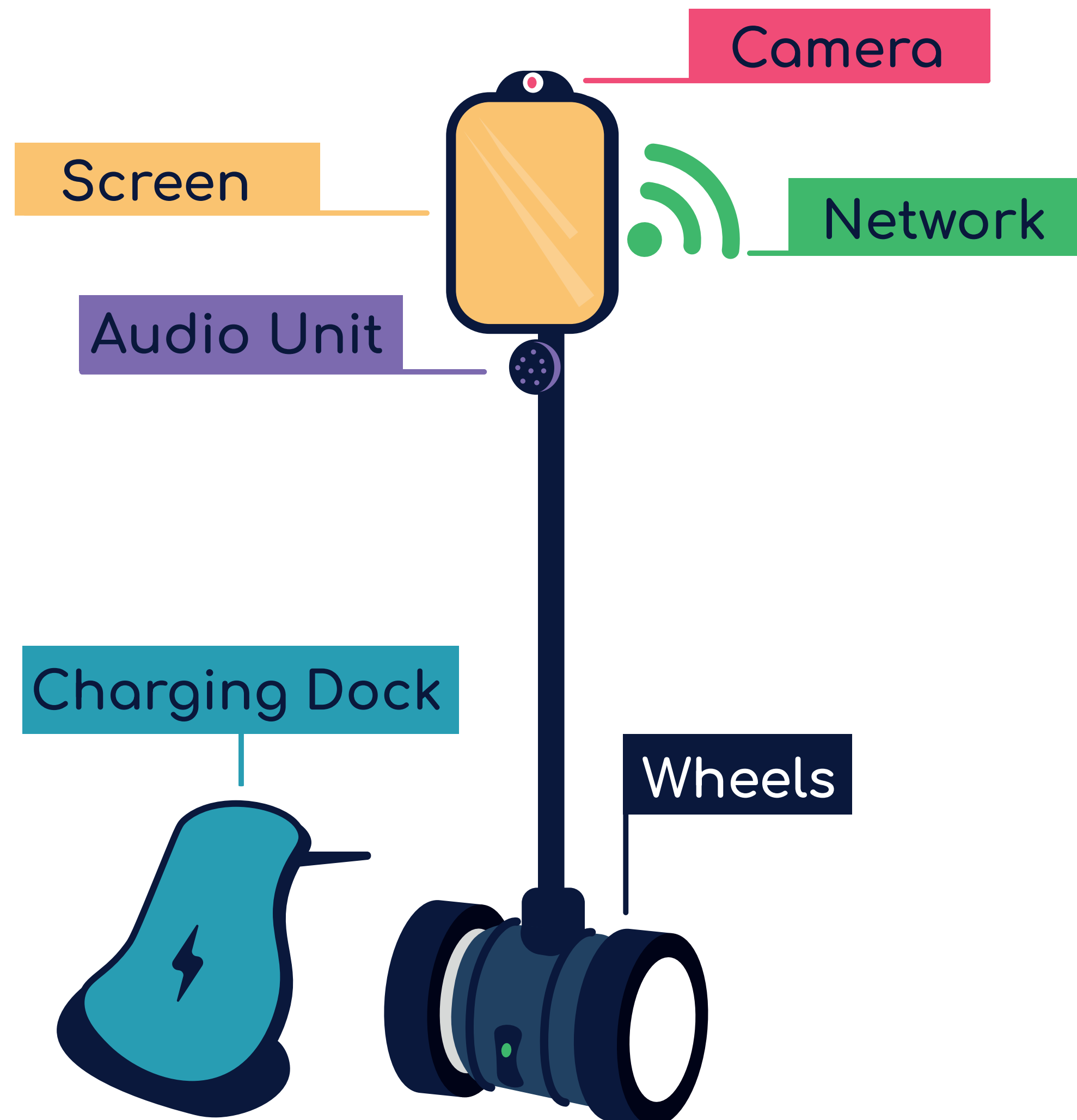
## What is a Telepresence Robot?

A Telepresence Robot (TR) is a mobile remote-controlled device, with wireless internet connectivity representing the remote user via video and audio stream.

Learn more about the technology and different models:



<https://www.trine-platform.com/project/what-is-a-telepresence-robot/>

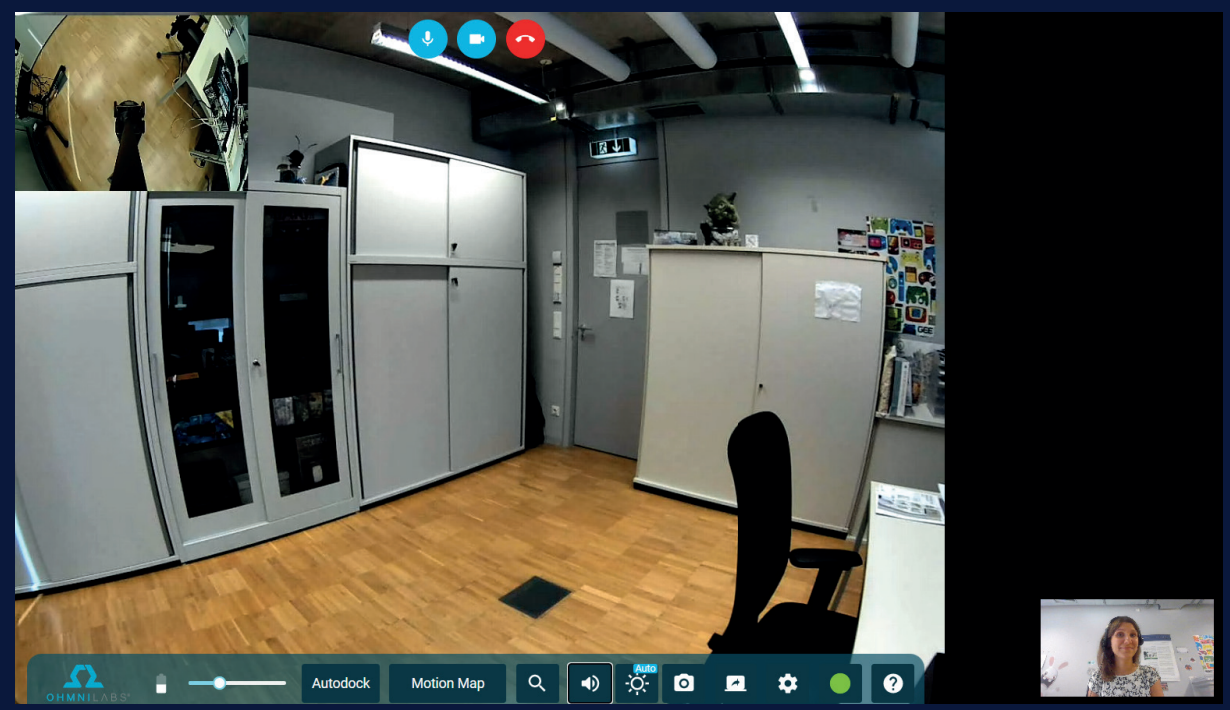


## Do I need a Telepresence Robot in my educational institution?

If the following points apply to your institution, you might consider buying a TR:

- ✓ There are regular or occasional distance students and/or teachers in the educational institution - or this should be made possible in the future.
- ✓ The teaching methods at the institution are not exclusively frontal teaching and there is a certain flexibility in designing the didactic methods.
- ✓ Social exchange between students and/or teaching staff is emphasized.
- ✓ All participants are open to try out and learn new technologies.
- ✓ A fast and stable wireless internet connection is available in the institution.
- ✓ The rooms in the building can be accessed barrier-free.
- ✓ A minimum budget of 2000€ is available to purchase a TR (in the best case more for further devices). Alternatively, you can think about building a cheaper DIY TR.

The remote user can control the TR via a web interface. Controlling the TR basically feels like playing a computer game - except that you are moving in a real space. :)



## In which areas of application can I benefit from using a Telepresence Robot in the education sector?

There are many situations where a TR can be used in the educational field. Here are some examples:

- A student who is homebound due to a disability or quarantine measures can use a TR to participate in school life, attend class and socialize with their fellow classmates.
- A teacher moves to another country, but the school still wants to keep them involved in teaching. So the teacher is visiting the class with a TR.
- To teach language skills in everyday conversations, a native speaker from abroad is visiting the school with a TR on a regular basis.
- A university is planning a conference and invites speakers to use the TR to save travel costs and contribute to environmental protection.
- A teacher who works remotely, regularly visits colleagues in the school building to socialize and to engage in everyday conversation.
- A student-to-be gets a campus tour with a TR to get an impression of the place of study.

## The Research Project "TRinE – Telepresence Robots in Education"

In the Erasmus+ project "TRinE – Telepresence Robots in Education" we deal with the question of how the educational sector can benefit from this technology, what challenges we face, and what projects and research already exist in this area.

On the TRinE platform we collect our findings and make them accessible to educational institutions, parents, students, researchers and anyone interested in TR technology:

[www.trine-platform.com](http://www.trine-platform.com)

Detailed project overview:



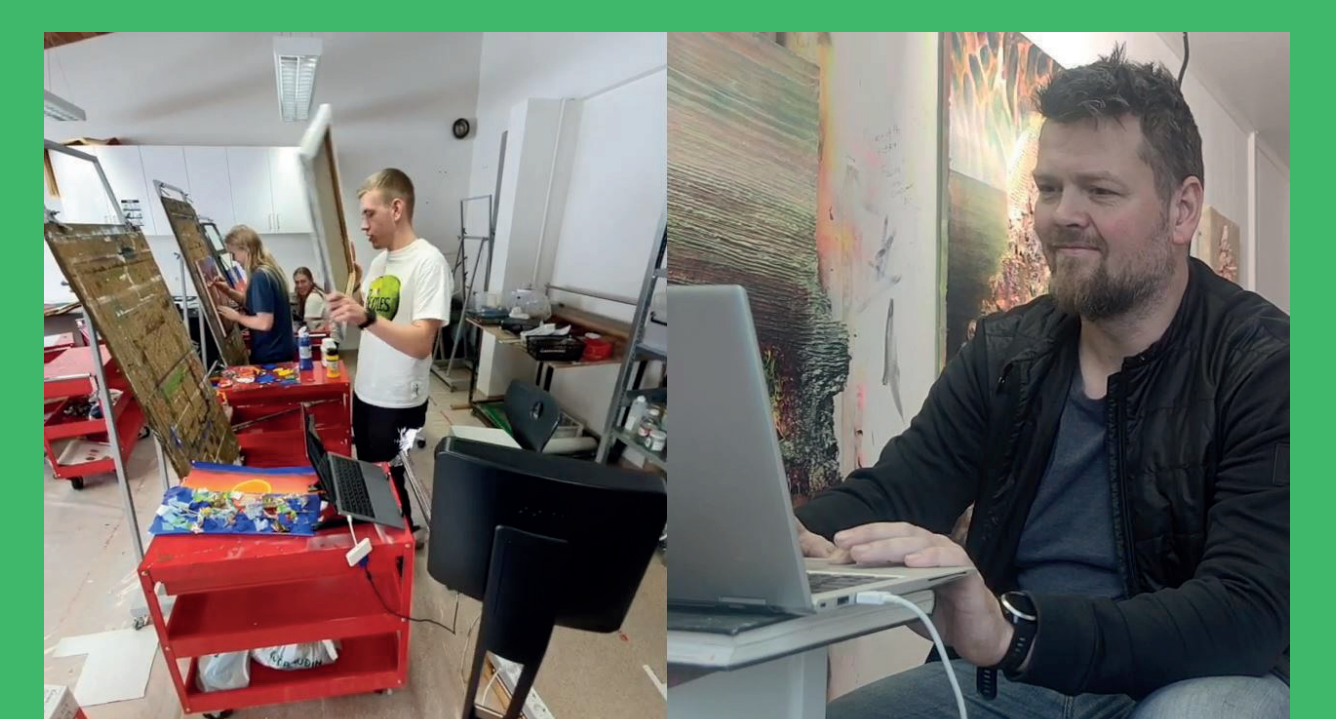
<https://www.trine-platform.com/project/trine-project-overview>

## Best Practice: Teaching Art with a Telepresence Robot

Watch the TRinE Story video where Bergþór Morthens shares how he teaches art at his school - Menntaskólinn á Tröllaskaga (MTR) in Iceland - from his studio in Sweden using a TR.

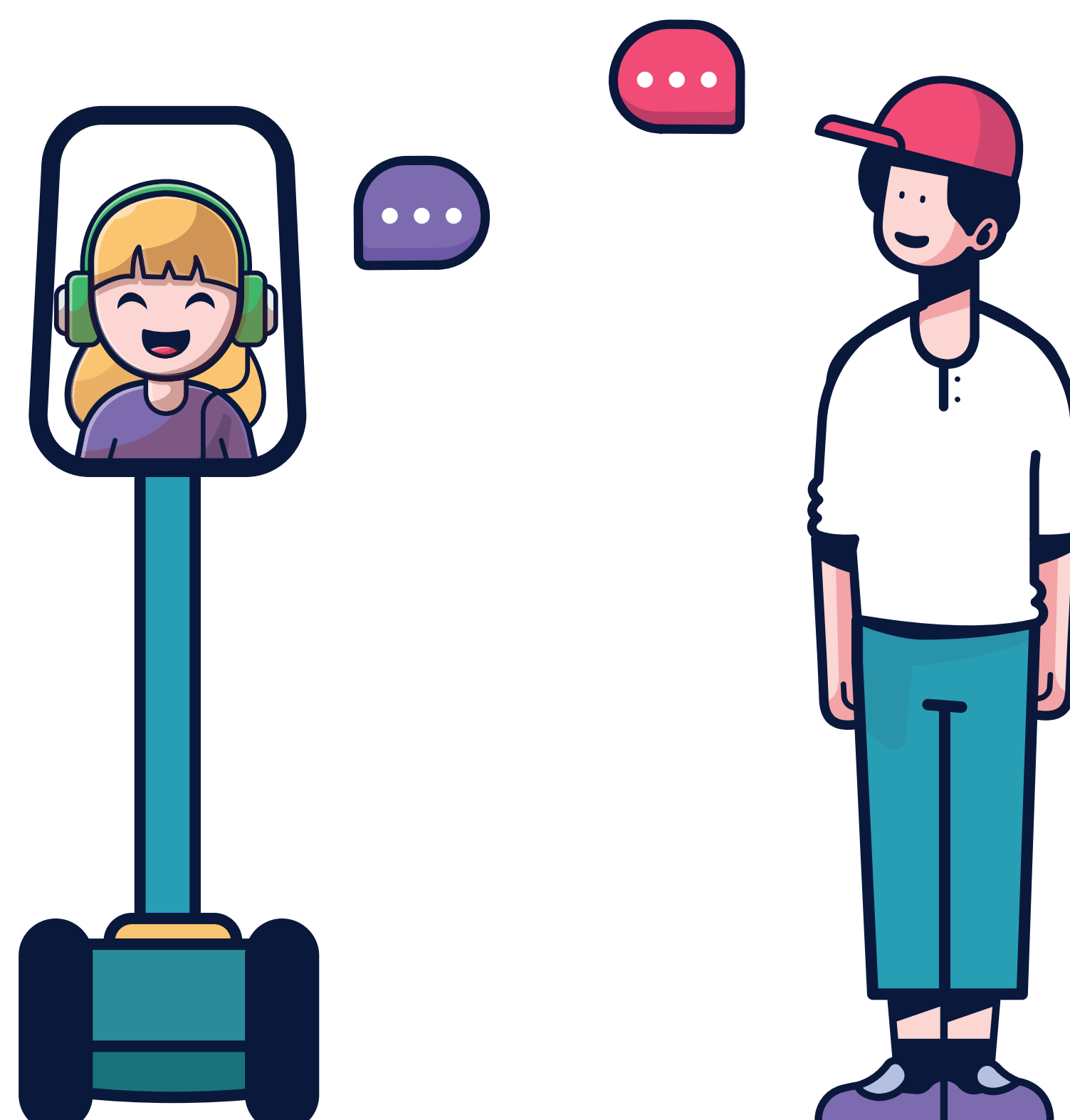


<https://youtu.be/GQ6Jz91K44c>



## It's all about social presence!

Using a TR is all about enhancing social presence from the remote user. If you just need to see or hear a person speak (i.e. while giving a lecture in front of the class), using video call tools might be sufficient.



Follow TRinE on Social Media:

@trineplatform

@trineplatform